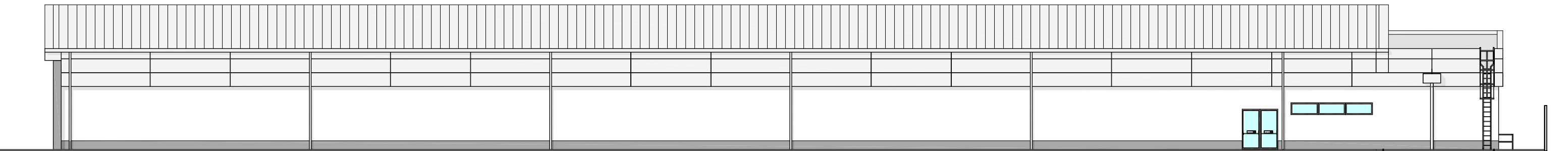
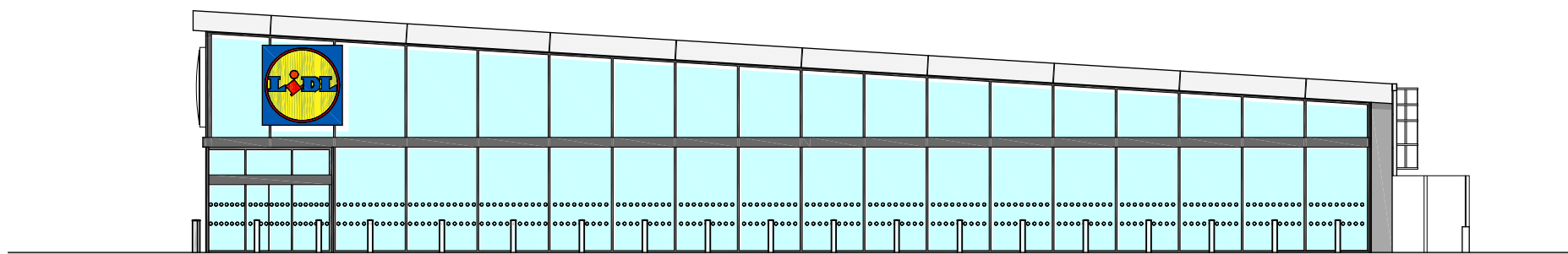


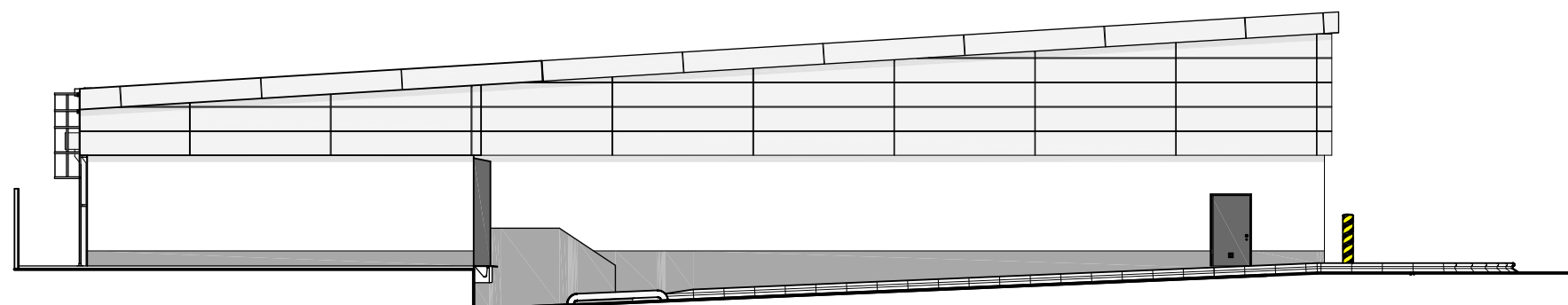
EAST ELEVATION



WEST ELEVATION



NORTH ELEVATION



SOUTH ELEVATION

PROPOSED MATERIALS

WALLS

20mm mineral render painted white RAL 9010 with low level plinth in grey RAL 7038.

Ash & Lacy Building Systems Freedom 1 rainscreen cladding with 4mm Alucobond in silver metallic finish RAL 9006.

ROOF

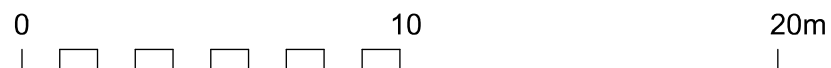
Standing seam aluminium sheet roofing in silver RAL 9006 finish

SHOPFRONT GLAZING, ENTRANCE / EXIT LOBBY AND WINDOWS

Powder coated aluminium framed, double glazed system in Graphite Grey, RAL 7024.

EXTERNAL DOORS

Steel external escape doors and sectional door for deliveries in Graphite Grey, RAL 7024.



Project	LIDL, VICTORIA ROAD, SOUTH RUISLIP	Date	OCT 2015	Scale	1:500 @ A3
Drawing	ELEVATIONS AS PROPOSED		3096	410	A

© This drawing must not be reproduced in whole or part without written consent